

PRAC[®] NEWS

January, 2026

WWW.PRAC.PRO

PRAC PROFESSIONALS[®]
ROPE ACCESS
COMMUNITY

ADVISORY COMMITTEE MEMBERS

Scan QR code to join us
for FREE today!





PRAC Launches Advisory Committee to Elevate Working-at-Height Safety Standards

Kuala Lumpur, Malaysia — Professionals Rope Access Community (PRAC) has officially launched its PRAC Advisory Committee, a strategic initiative aimed at strengthening safety culture, governance, and regulatory compliance within the rope access and working-at-height (WAH) industry. The Advisory Committee has been established to provide professional guidance, industry insight, and technical support to organizations involved in high-risk working-at-height activities. Through this platform, PRAC seeks to reduce safety incidents while supporting organizations in meeting legal, regulatory, and operational safety requirements.

The committee will play a key role in promoting best practices across multiple sectors, including construction, building maintenance, energy, telecommunications, and industrial services—where working at height remains a critical safety challenge.

Key Objectives of the PRAC Advisory Committee

- Promote a strong and sustainable safety culture in rope access and WAH activities
- Minimize safety incidents through improved competency, governance, and risk management
- Support organizations in strengthening operational safety standards and regulatory compliance
- Support and Benefits for Members

Organizations participating in the PRAC Advisory Committee will receive access to:

- Professional guidance from PRAC-certified safety and rope access experts
- Support in developing SOPs, safety documentation, and contractor screening processes
- Basic safety audits for rope access and working-at-height operations
- Review and feedback on contractor safety documentation and certification validity
- Contractor verification support to ensure compliance and competency
- Ready-to-use safety documentation templates, including checklists and PPE inspection records
- Online and on-site safety awareness seminars
- Updates on legal, regulatory, and industry developments
- Opportunities for organizational visibility through PRAC news, reports, and the official website

According to PRAC, the launch of the Advisory Committee reflects the organization's ongoing commitment to raising professional standards and fostering a safer working-at-height ecosystem in Malaysia and the region.

Participation in the PRAC Advisory Committee is open with **FREE** registration, allowing organizations to demonstrate their commitment to best practices, legal compliance, and continuous improvement in workplace safety. PRAC welcomes industry players to engage in briefing sessions or discussions to explore how the Advisory Committee can support their safety and operational goals.

PRAC Launches PASSWORK: One Card. All Competencies. One Touch.



Kuala Lumpur, Malaysia — Professionals Rope Access Community (PRAC) has officially introduced **PRAC PASSWORK**, an innovative NFC-enabled professional competency card designed to simplify, secure, and strengthen workforce verification across safety-critical industries.

Built for professionals operating in high-risk environments, PRAC PASSWORK enables instant verification of identity, competencies, and safety-related information with a simple tap on a smartphone. This digital solution eliminates manual checks, reduces administrative burden, and enhances on-site compliance and safety assurance, particularly in dynamic worksite conditions where speed and accuracy are critical.

Designed for Today's Safety-Critical Workforce

PRAC PASSWORK serves as a single, trusted card that consolidates multiple competencies into one secure platform, allowing employers, safety officers, and site supervisors to verify personnel credentials in seconds. The system supports real-time access to validated information, helping reduce the risk of outdated, incomplete, or unverifiable records being used on-site.

Why PRAC PASSWORK?

- One card for all competencies
- Fast and secure NFC-based verification
- Trusted by safety and industry professionals
- Designed to support compliance and safer worksites

The system is aligned with industry safety requirements and supports organizations in improving governance, traceability, and workforce competency management—especially in sectors such as rope access, construction, maintenance, energy, and industrial services. By digitizing credential verification, PRAC PASSWORK also supports more efficient audits and stronger regulatory confidence.

The launch of PASSWORK reflects PRAC's continued commitment to digital innovation and professionalization within the working-at-height ecosystem, providing practical tools that enhance safety performance, accountability, and operational transparency across the industry.

PRAC PASSWORK is now available for organizations and professionals seeking a smarter, more reliable approach to competency verification.

Discover PRAC PASSWORK in Action

Scan the QR code to watch a short video demonstration of PRAC PASSWORK and see how NFC-enabled verification is transforming competency management in safety-critical industries.

Ready to take the next step?

Scan the registration QR code to join PRAC PASSWORK and experience a smarter, faster, and more secure way to verify professional competencies.

**FIND OUT MORE
HERE!**

REGISTER HERE!



PRAC Officially Launches Operations in Brunei



Bandar Seri Begawan, Brunei — Professionals Rope Access Community (PRAC) has officially launched its operations in Brunei Darussalam, marking a significant milestone in the organization's regional expansion and commitment to advancing working-at-height and rope access safety standards in Southeast Asia.

The launch of PRAC Brunei strengthens PRAC's presence beyond Malaysia, bringing its proven training systems, competency certification, and industry-led safety practices to the Bruneian market. The initiative aims to support local industries by enhancing workforce competency, regulatory compliance, and operational safety in high-risk environments.

PRAC Brunei will focus on delivering professional training programs, working-at-height safety awareness, rope access competency development, and advisory support tailored to local industry needs while aligning with international best practices.

According to PRAC, the expansion into Brunei reflects growing regional demand for structured competency frameworks, verified certifications, and safer worksite practices—particularly in sectors such as construction, oil and gas, maintenance, and industrial services.



With experienced trainers drawn from active industry operations, PRAC Brunei will emphasize practical, real-world training that goes beyond theory, ensuring participants are job-ready and safety-competent.

PRAC looks forward to working closely with industry stakeholders, partners, and authorities in Brunei to contribute to a safer, more professional working-at-height ecosystem.





Wookkei Sdn Bhd Strengthens Commitment to Safety in Working at Height and Rope Access Operations

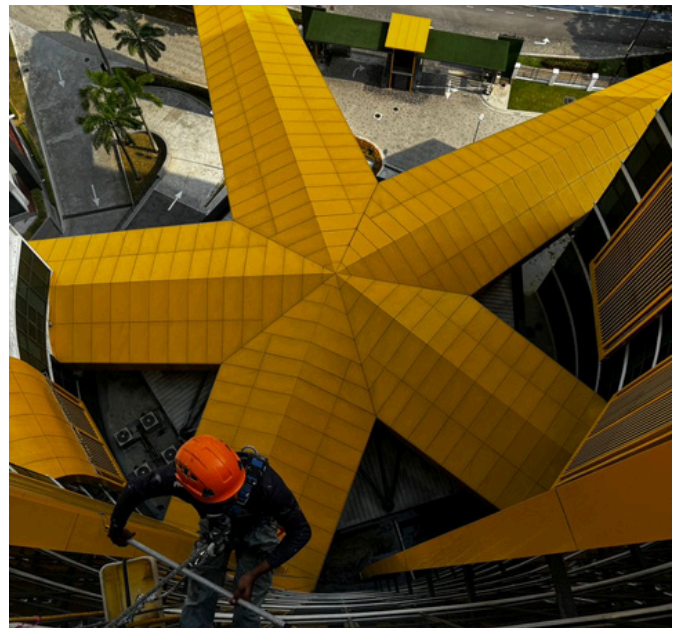
Selangor, Malaysia – February 2026 — Wookkei Sdn Bhd has reaffirmed its strong commitment to workplace safety by enhancing its standards and practices in working at height and industrial rope access operations. This initiative reflects the company's proactive approach to protecting its workforce while maintaining operational excellence across high-risk environments.

Recognizing the inherent risks associated with elevated work areas, Wookkei Sdn Bhd has implemented comprehensive safety measures, including the use of certified personal protective equipment (PPE), structured safety procedures, and competency-based training programs for its personnel. These measures ensure that every technician is equipped with the knowledge, skills, and equipment necessary to perform tasks safely and efficiently.

Raising Industry Standards Through Competency and Training
As part of its safety-driven strategy, the company emphasizes competency certification and continuous professional development. Workers are trained in proper rope access techniques, hazard identification, fall prevention systems, and emergency rescue procedures. This ensures that all operations are conducted in compliance with industry best practices and relevant occupational safety standards.



Vincent Chan, the Project Director at Wookkei Sdn Bhd, leads the company's safety initiatives, ensuring all protocols meet the highest standards and that staff are fully trained for industrial rope access operations.



"Safety is not just a requirement—it is a core value at Wookkei Sdn Bhd. Our goal is to ensure that every team member returns home safely while delivering professional and reliable services to our clients."

Supporting a Safer Industry Future

Wookkei Sdn Bhd's initiative aligns with Malaysia's broader efforts to strengthen workplace safety culture, particularly in sectors involving construction, maintenance, and industrial access. The company aims to serve as a responsible industry player by promoting safe working practices and contributing to the development of a more competent and safety-conscious workforce.

Through its continued commitment, Wookkei Sdn Bhd demonstrates that safety is a fundamental component of operational success and sustainable industry growth.

PRAC[®] NEWS

January, 2026

WWW.PRAC.PRO

STAY TUNE FOR MORE!

PRAC

PROFESSIONALS[®] ROPE ACCESS COMMUNITY

DOSH
JKKP



SkillsMalaysia

Kod PB S10528



Trainer ID : 19876



PUSAT LATIHAN
BERTAULIAH

No.: CIDB-PLCGD20240116-212



Accredited Personnel Certification Body

Training courses provided by a company certified to ISO 9001 and ISO 45001 standards.

CONTACT
US NOW



+603 9174 3796



admin@dragger.co



PRAC Training Centre,
1, Jalan 2/118b, Desa Tun Razak,
56000 Kuala Lumpur